

# Post-Election Audit Manual



Michigan Department of State  
Bureau of Elections

October 2016

# Post-Election Audits Manual - Table of Contents

This manual is designed to assist with the conduct of post-election audits.

Introduction to Post-Election Audits .....	3
Selection Process .....	3
Clerk Preparation.....	4
Conducting the Post-Election Audit .....	4
Pre-Election Requirements.....	4
e-Pollbook Evaluation.....	5
Voting System Review.....	5
Test Deck Completion.....	6
Application to Vote - Military and Overseas Voter Review.....	7
Ballot Count & Container Examination.....	7
Paperwork Assessment.....	8
Provisional Ballot 4-Step Procedure Form Review.....	10
Final Review.....	10
Appendix.....	13

## Introduction to Post-Election Audits

PA 271 of 2012 instructs the Secretary of State to develop an election audit program that details the documents to be inspected and the procedures used in preparation for and during an election. The post-election audit process will thoroughly review procedures performed before, during, and after the conduct of an election. Information collected as part of the post-election audit process will be used as an educational tool for all levels of election administration. Assignments will be made in the eLearning Center to reinforce deficiencies found of the local and/or county clerks.

### Key Points

☆ *Audit Process*

Following the canvass of an election, counties and Bureau of Elections staff will conduct a thorough review of pre-election and election day documents to determine if procedures were properly followed according to state law and established procedure.

☆ *Selection Process*

The Bureau of Elections will randomly select precincts for counties following each election and may select additional precincts to be audited at the state level.

☆ *Focus of the Audit*

Election notices, election inspector appointments and training, e-Pollbook security, test deck procedures, military and overseas voter applications, and a review of the pollbook and ballot containers used on election day will be the primary focus of the audit.

☆ *Audit Findings*

Discrepancies and deficiencies found as a result of the post-election audit will be used as training points for the local clerk who is participating in the audit as well as aid in the determination of future training needs to be provided at both the county and state level.

### Important Considerations

Those subject to a post-election audit should continue to maintain the security of their election day materials until the post-election audit has been conducted. The goal of the post-election audit process is to enhance election administrators' understanding of required elections procedures and practices.

## Selection Process

The Bureau of Elections will randomly select precincts for county audits the day after an election. The Bureau of Elections may select additional precincts to be audited at the state level as well. Participants will be contacted by their County Clerk or the State depending on who is conducting the audit. The list of those being audited will also be announced in a News Update following the election.

Participants must maintain security on all of their election day materials until the post-election audit has been conducted. Further, the participants should ensure the e-Pollbook (EPB) and associated encrypted flash drive for the precinct selected are kept secure and data is ***not*** deleted until the audit is completed. (Note: Per the EPB user agreement, data must be deleted seven days post canvass; this deadline is extended for precincts involved in post-election audits.)

## Clerk Preparation

County clerks conducting audits will coordinate the scheduling of the audit with the local jurisdiction. If possible, the audit should take place at a location agreeable to the local clerk. As a subject of the audit, the local clerk and county clerk must provide all materials needed to conduct the audit of the specified precinct **and** associated absent voter counting board.

Materials needed to conduct a Post-Election Audit	
<input type="checkbox"/>	Close of Registration Notice (Affidavit of Publication)
<input type="checkbox"/>	Election Notice (Affidavit of Publication)
<input type="checkbox"/>	Public Accuracy Test Notice (Affidavit of Publication)
<input type="checkbox"/>	Election Commission's election inspector appointment record (minutes or signed resolution from meeting)
<input type="checkbox"/>	Listing of appointed election inspectors
<input type="checkbox"/>	Election Inspector applications for all inspectors appointed
<input type="checkbox"/>	Confirmation that election inspectors attended training (dated or signed certificate or sign in sheet)
<input type="checkbox"/>	Confirmation that election inspector appointments were sent to the major political parties (fax or email verification or certified mail receipt) [partisan elections only]
<input type="checkbox"/>	e-Pollbook laptop used in the precinct and encrypted flash drive(if applicable)
<input type="checkbox"/>	Absent Voter Ballot Posting [partisan elections only]
<input type="checkbox"/>	Sealed container that contains all testing materials; including: <ul style="list-style-type: none"><li><input type="checkbox"/> Test deck</li><li><input type="checkbox"/> Chart of pre-determined results</li><li><input type="checkbox"/> Tabulator zero and results tapes</li></ul>
<input type="checkbox"/>	Optical Scan Program Testing and Security Certification (may be sealed in the test container)
<input type="checkbox"/>	Election Commission Certification - Public Accuracy Test (if applicable)
<input type="checkbox"/>	AutoMARK Preparation Checklist and Test Certification Form
<input type="checkbox"/>	AutoMARK and flash card used on election day
<input type="checkbox"/>	Pollbook
<input type="checkbox"/>	Applications to Vote
<input type="checkbox"/>	Affidavits of Voter Not in Possession of Picture Identification
<input type="checkbox"/>	AV apps for Military and Overseas Voters and confirmation of ballot sent (e.g., email or fax receipt, proof of mailing if available)
<input type="checkbox"/>	Sealed ballot container
<input type="checkbox"/>	Program container certificate (if applicable)
<input type="checkbox"/>	Provisional Ballot 4-Step Procedure Forms
<input type="checkbox"/>	Master card for any voter issued an Affidavit or Envelope ballot

## Conducting the Post-Election Audit

The post-election audit must be conducted *within 30 days of Canvass completion unless a recount has been ordered*. The post-election audit will require the inspection of election documents and the procedures used prior to the election and on election day. A comprehensive worksheet will be used to uniformly conduct the post-election audit for precincts throughout the state. Detailed instructions on the use of the worksheet follow. All discrepancies should be documented on the back side of the worksheet. **Note:** If the Board of Canvassers corrected any item reviewed during the conduct of the post-election audit at the Canvass, the information provided by the election inspectors should be used to answer the appropriate questions. Corrections made by the Board of Canvassers should be noted on the reverse side of the worksheet.

### Pre-Election Requirements

#### Public Notices

Michigan Election Law requires a number of notices to be published in a local newspaper prior to an upcoming election. The newspaper should supply an Affidavit of Publication to the publisher to confirm publication. Review the following notices:

#### *Close of Registration (MCL 168.498(3) – Ch. 16. Clerk Accreditation Manual)*

- Publication Date must be no later than the seventh calendar day before the registration deadline.
- Must include: name of the jurisdiction, date of the election, deadline to register to vote, listing of the offices to be elected/nominated, a brief description of ballot proposals and

where to find the full text, locations where registrations will be accepted, and days and hours when an authorized person will be available to accept the registration.

*Notice of Election (MCL 168.653a – Ch. 16. Clerk Accreditation Manual)*

- Publication Date must be no later than the seventh calendar day before the election.
- Must include: date of the election and polling place hours, listing of the offices to be elected/nominated, a brief description of ballot proposals and where to find the full text, a listing of polling place locations, and a statement regarding accessibility in the polling places.

*Public Logic and Accuracy Test (MCL 168.798(1) Ch. 16 Clerk Accreditation Manual)*

- Publication date must be at least 48 hours prior to the conduct of the test.
- Test date must be conducted no later than the fifth day prior to the election.
- Must include: date of the election, date, time, and location of the test and a statement regarding the purpose of the test.

When reviewing these items, place a checkmark in the Yes box when all of the above criteria are met. If a component is missing, place a checkmark in the No box and explain the discrepancy on the backside of the worksheet.

*Election Inspectors – Ch. 13 Clerk Accreditation Manual*

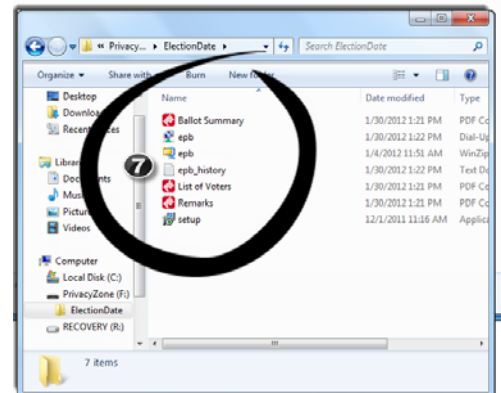
The Election Commission of each jurisdiction must appoint precinct and receiving board inspectors at least 21 days but not more than 40 days before each election (MCL 168.674). Review Election Commission minutes and/or resolutions to ensure these appointments took place. Place a checkmark in the appropriate box to indicate if the Election Commission made the appointments. Ensure at least one Republican and one Democrat was appointed to the precinct.

Next, review the Election Inspector applications provided. Ensure there is an application for every inspector appointed (MCL 168.677). Place a checkmark in the appropriate box to indicate if all applications are available. Then verify each election inspector attended a training class (MCL 168.683). Place a checkmark in the appropriate box to indicate if proof was provided for each inspector appointed. Lastly, place a checkmark in the appropriate box to indicate if proof that the election inspector appointments were sent to the local political parties if evaluating a partisan election (MCL 168.674).

**e-Pollbook Evaluation** (if applicable)

Certain security features must be employed in the e-Pollbook software and on the encrypted flash drive in order to maintain security of sensitive voter information (Reference User Agreement and e-Pollbook User Manual). Using the laptop and flash drive used in the precinct on election day, evaluate the following:

1. Open the EPB Software and verify the encryption password is a strong password and not QVFSecure08. *A strong password contains a combination of at least eight upper and lower case characters with at least one number or symbol.*
2. Login to the software using the ADMIN username. Click on Sys Admin and User Administration. Verify additional usernames were created. Check Yes or No next to “Unique User/Pwd” on the worksheet.
3. Plug the encrypted flash drive in and ensure the V-Safe100 software is listed. Double click on V-Safe 100. If a password is requested, answer Yes to the “PrivacyZone Active” question on the worksheet. Otherwise answer No and No to “Docs Saved in PZ.”
4. Request the Password from the local Clerk and enter into the V-Safe 100 pop-up box. Verify the seven files listed in the image to the right were saved. You may need to open a folder to verify. If all seven files are listed (if EMP was used to download the EPB, only six files will be listed), mark Yes on the worksheet for “Docs Saved in PZ.” If some of the files are listed but not all, indicate which files are missing on the back side of the worksheet.
5. Record the date the epb.zip WinZip file was modified.



**Absent Voter Information Posting**

If auditing a partisan election, review the absent voter information posting required to be posted before and on election day. Prior to 8 a.m. on election day the number of AV ballots distributed to absent voters, the number of absent voter ballots returned and the number of absent voter ballots being delivered must be recorded and posted. Before 9 p.m. the number of absent voter ballots returned on election day, number of absent voter ballots returned and delivered for processing on election day and the grand totals for each must be recorded and posted. Finally once all returns are complete, the total number of absent voter ballots returned by voters and the total number processed should be recorded and posted. Indicate completion on the worksheet. (MCL 168.765(5) and Ch. 6 Clerk Accreditation Manual).

**Voting System Review – Test Procedure Manual for Optical Scan Voting Systems & AutoMARK**

A vital component to a successful election is the conduct of the preliminary and public Logic and Accuracy Testing prior to the election. All Logic and Accuracy Testing materials should have been placed under seal in an approved ballot container (separate from the precinct container) after testing was completed. Verify the container containing the testing materials is sealed and indicate *Yes or No* on the worksheet. Verify that the seal number on the container is the seal number that was recorded on the *Optical Scan Program Testing and Security Certification* (which may be sealed in the container) and record the answer on the worksheet.

A record of the tabulator serial number and the seal number must also be recorded on the *Optical Scan Program Testing and Security Certification* form after the preliminary accuracy test. When performing this portion of the audit, verify that the *Optical Scan Program Testing and Security Certification* lists the seal and serial number for the tabulator. Verify the seal and serial numbers listed on the *Optical Scan Program Testing and Security Certification* match the seal and serial numbers listed in the corresponding precinct’s Clerk’s Preparation Certificate portion of the Pollbook. Place appropriate checkmarks on the worksheet to indicate whether these seals and serial numbers matched. If the jurisdiction used a vendor for testing and that same vendor programmed the memory cards, verify that the *Election Commission Certification* form was also completed.

Next write the dates the Preliminary and Public Tests were conducted on the appropriate line of the worksheet. Public Tests should have been conducted at least five days prior to the election. Preliminary tests should be conducted as soon after receiving ballots as possible and well before the public test.

**Test Deck Completion**

Next review the Logic and Accuracy Testing “test deck” and chart of pre-determined results. There are initially thirteen ballot creation instructions required to be marked on to test ballots and then additional test ballots must be created to ensure the vote totals are different for each candidate in a race. Place a checkmark in the appropriately numbered box on the checkbox to indicate proper completion of each test ballot. (MCL 168.798(1), R 168.773 and R 168.776). See Appendix for different election type charts.

Instruction	Pre-determined result – General Election
<b>1</b>	All positions on the ballot voted.
<b>2</b>	All unused positions on the ballot voted.
<b>3</b>	A blank ballot.
<b>4</b>	One straight party vote cast (no other partisan votes).
<b>5</b>	Two straight party votes cast resulting in an overvote (no other partisan votes).
<b>6</b>	In a different office for each instruction: (a) One straight party vote, plus: (b) In a “vote for 1” partisan office, 1 vote for 1 candidate of the same party used in (a) (c) In a “vote for 1” partisan office, 1 vote for 1 candidate of a different party than used in (a) (d) In a “vote for 2” partisan office, 1 vote for 2 candidates, each from different parties (e) No votes in a partisan office where a candidate appears under the party selected in (a) (f) A vote for 1 write-in candidate in either a partisan or non-partisan office (g) Non-partisan offices and proposals voted
<b>7 (Ballot 1)</b>	No straight party vote and votes correctly voted in the partisan section with overvotes in the non-partisan and proposal sections

<b>7 (Ballot 2)</b>	No straight party vote and votes correctly voted in the non-partisan section with overvotes in the partisan and proposal sections
<b>7 (Ballot 3)</b>	No straight party vote and votes correctly in the proposal section with overvotes in the partisan and non-partisan sections
<b>8</b>	<p>In a different office for each instruction:</p> <p>(a) Two straight party votes cast</p> <p>(b) In two "vote for 1" offices, 1 vote for 1 candidate listed under the first party selected in (a) and a vote for 1 candidate listed under second party selected in (a)</p> <p>(c) In two "vote for 1" offices, 1 vote for 1 candidate of the first party selected</p> <p>(d) In a "vote for 1" office, 1 vote for 1 candidate of the second party selected</p> <p>*Additional ballots may be required to complete (c) and (d).</p>
<b>9</b>	<p>In a different office for each instruction:</p> <p>(a) One straight party vote where 2 candidates of that party are in a "vote for 2" partisan race</p> <p>(b) In the first "vote for 2" office, where there are 2 candidates from the party used in (a), 2 votes for candidates of a different party than used in (a)</p> <p>(c) In a second "vote for 2" office, where there are 2 candidates from the party used in (a), 2 votes for candidates of two different parties than used in (a)</p> <p>*if a ballot contains a "vote for 3" office and there are 3 candidates from that party running, an additional test ballot must be included following this same instruction but subbing 3 for 2.</p>
<b>10</b>	<p>In a different office for each instruction:</p> <p>(a) One straight party vote where 2 candidates of that party are in a "vote for 2" partisan race</p> <p>(b) In the first "vote for 2" office, where there are 2 candidates from the party used in (a), 1 vote for a candidate of a different party than used in (a)</p> <p>(c) In a second "vote for 2" office, where there are 2 candidates from the party used in (a), 1 vote for a candidate of the party used in (a) and 1 vote for a candidate of a different party</p> <p>(d) In a third "vote for 2" office, where there are 2 candidates from the same party used in (a), 1 vote for a candidate of the same party used in (a)</p> <p>*Additional ballots may be required to complete this test</p>
<b>11</b>	<p>(a) One straight party vote where only 1 candidate of the same party is in a "vote for 2" partisan race</p> <p>(b) In a second "vote for 2" office, where there is only 1 candidate from the party used in (a), 1 vote for a candidate of a different party than used in (a)</p> <p>*Additional ballots may be required to complete this test</p>
<b>12</b>	One straight party vote and individual votes for each candidate in that same party. Repeat for each party.
<b>13</b>	A ballot voted from a different precinct.
<b>Dif. Totals</b>	Additional ballots voted to ensure at least 2 straight party votes have been cast for each party and a different total number of valid votes are cast for each party in the straight party section, each candidate within an office, and for and against each proposal.

Once each ballot and the chart of pre-determined results have been reviewed, compare the chart of pre-determined results with the tabulator tape. Check *Yes* or *No* on the worksheet provided to indicate whether the results from the chart of pre-determined results matched the tabulator tape or not. Lastly, indicate on the worksheet whether or not a zero tape for the test was provided.

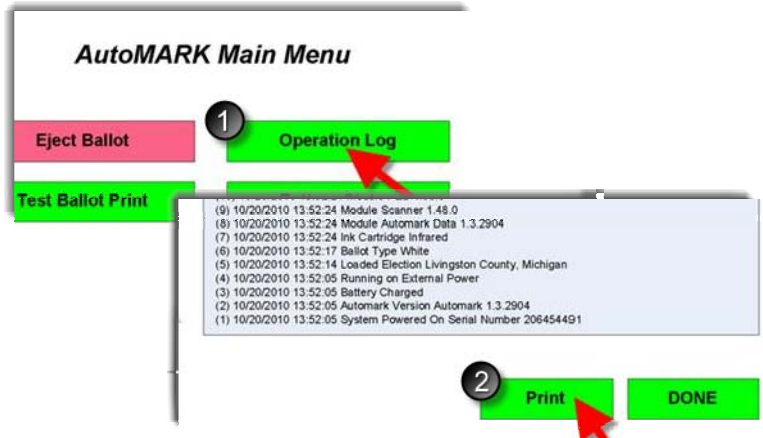
## AutoMARK

Review the *AutoMARK Preparation Checklist and Test Certification Form* and verify it was properly completed.

### Audit Log

Using the AutoMARK and flash card used on Election Day, power the AutoMARK on and turn the key to TEST. Next print the Audit Log by:

1. Select Operation Log
2. Select Print
3. Feed paper (we recommend using legal size paper) into the AutoMARK as needed to print the full audit log



Using the chart below, review the audit log for the specific questions listed and complete the appropriate section on the worksheet.

Question	Evaluation Criteria	Corresponding listing in Audit Log
Was the AutoMARK tested prior to Election Day?	Date before Election Day – Test Print Ballot	(34) 10/20/2010 14:01:06 Test Print Successful Ballot ID: 22 (33) 10/20/2010 13:56:16 Ballot Inserted Ballot ID: 22 (32) 10/20/2010 13:56:16 Loaded Ballot ID: 22 (31) 10/20/2010 13:55:37 Test Print Screen Entered
	Date before Election Day – Ballots inserted and marked successfully	(39) 10/20/2010 14:21:33 Ballot Marked Successful Ballot ID: 21 (38) 10/20/2010 14:05:12 Ballot Inserted Ballot ID: 21
Was the AutoMARK tested on Election Day?	Date on Election Day – Test Print Ballot	(79) 11/2/2010 6:56:43 Test Print Successful Ballot ID: 21 (78) 11/2/2010 6:51:34 Ballot Inserted Ballot ID: 21 (77) 11/2/2010 6:51:34 Loaded Ballot ID: 21 (76) 11/2/2010 6:50:32 Test Print Screen Entered
How many voters used the AutoMARK on Election Day?	Date on Election Day – vote successful – Tally each instance.	(91) 11/2/2010 14:34:16 Ballot Marked Successful Ballot ID: 21 (92) 11/2/2010 14:32:36 Ballot Inserted Ballot ID: 21

### Application to Vote & Military and Overseas Voter Review

Review the applications to vote. Physically count the applications to vote and determine if there are the same number of applications to vote as voters in the pollbook. Next, spot check the applications to vote to ensure they were properly completed by voters and election inspectors. Check *Yes or No* on the worksheet provided to indicate the answers to these questions.

Record the number of *Affidavits of Voter Not in Possession of Picture Identification* completed.

If absentee ballots were processed in the precinct, use the *AV Applications to Vote* to determine whether the precinct processed any Military or Overseas voters. Then review the applications to ensure those ballots were sent within 24 hours of receipt of the application or if the application was received more than 45 days prior to

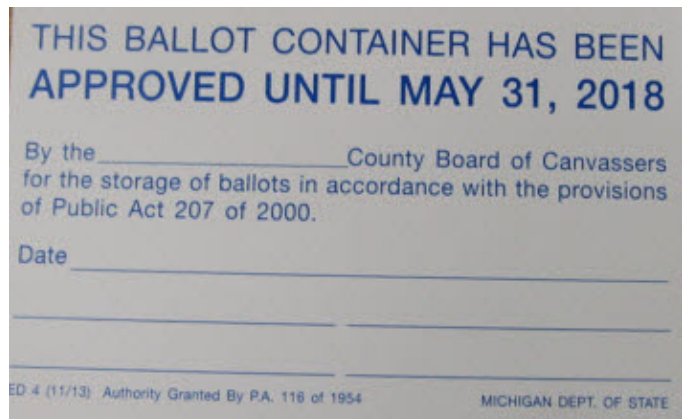


the election the ballot was sent by the 45<sup>th</sup> day prior to the election (e.g., email or fax receipt, proof of mailing if available). Answer the appropriate questions on the worksheet and note any discrepancies on the backside of the worksheet. **NOTE:** In a precinct with no or minimal military and overseas absentee ballots, the local Clerk should bring all military and overseas absent voter ballot applications for the jurisdiction. Conduct a thorough review of those applications using the guidelines above. (*MCL 168.759a and Military and Overseas Voter for Election Administrators Manual*)

### Ballot Container Examination

Locate the Ballot Container seal number recorded in the Pollbook and enter it on to the worksheet. Then examine the Ballot Container. Record the seal number found on the *Ballot Container Certificate* (below left) and then the seal number on the actual container on to the worksheet. Indicate on the worksheet whether the *Ballot Container Certificate* was signed by two election inspectors of differing political parties. Now verify the container was properly sealed. A properly sealed container is one in which the seal has been affixed securely and the ballot container is unable to be opened. The last check in this section is to ensure the Board of Canvassers approval certificate (below right) is affixed to the ballot container. Record the answer to these questions on the worksheet by selecting the appropriate *Yes* or *No* boxes. (*Ch. 12 Clerk Accreditation Manual*).

Ballot Container Certificate	
Date of Election: _____	
_____ City, Township, or Village	_____ Ward/Pct #
<b>This ballot container contains:</b>	
<input type="checkbox"/> Voted Ballots	
<input type="checkbox"/> Unvoted Ballots	
<input type="checkbox"/> Spoiled Ballot Envelope	
<input type="checkbox"/> Original Ballot Envelope	
We, the undersigned members of the Board of Election Inspectors, certify that the ballot container was properly sealed by affixing seal # _____.	
<input checked="" type="checkbox"/> DEMOCRATIC INSPECTOR	<input checked="" type="checkbox"/> REPUBLICAN INSPECTOR
<small>Signature of member who sealed/verified the ballot container.</small>	<small>Signature of member who sealed/verified the ballot container.</small>



### Spoiled & Duplicated Ballots

Open the ballot container and pull out the Spoiled and Original Ballot Envelopes. Does the number of spoiled ballots in the Spoiled Ballot Envelope equal the number of spoiled ballots listed in the Pollbook? Answer the appropriate question on the worksheet. Next, open the Original Ballot Envelope. If the envelope contains ballots, attempt to locate the matching duplicate with the voted ballots in the ballot container. Verify the ballots were properly duplicated and indicate that verification on the worksheet. Finally, indicate whether any of the duplicated ballots were electronic (MOVE) ballots and if they were duplicated properly as well on the worksheet. Do this in a manner which avoids identifying the voter. (*Ch. 12 Clerk Accreditation Manual*).

### Paperwork Assessment

Finally, review the remaining components of the Pollbook. The following images are examples of properly completed Pollbooks. Please note, there are many styles of Pollbooks in use throughout the state and the layout may be different from what is displayed below.

**Pollbook**

Items 1-4 are generally found on the inside cover of the Pollbook.

1. Review the Clerk's Preparation Certificate. A completed Clerk's Preparation Certificate includes serial and seal numbers for both the tabulator and the AutoMARK. In addition, the precinct number should be included as well as a signature and date prior to the election.
2. Ensure all checkboxes are completed in the Election Inspectors' Preparation Certificate and that the inspectors signed. Many pollbooks combine the signatures with step 3.
3. Ensure all inspectors (including the chairperson) subscribed to the Constitutional Oath of Office.
4. Ensure the Oath administrator signed in the appropriate location(s).
5. Compare the signatures of the election inspectors with the Election Commission appointments to ensure all that signed the oath were appointed.

**1 CLERK'S PREPARATION CERTIFICATE**  
 Tabulator Serial No. 12345 Tabulator Seal No. 34567  
 AutoMARK Serial No. 23456 AutoMARK Seal No. 45678  
 I certify that the above tabulator and AutoMARK have been properly prepared and tested for this election in accordance with law, and that at the completion of the tests, the programs were inserted into the tabulator and AutoMARK and sealed with seals bearing the seal numbers recorded above.  
 # X Signature \_\_\_\_\_ Date before election \_\_\_\_\_  
 Ward/Precinct No. \_\_\_\_\_ Signature of Clerk or Authorized Assistant \_\_\_\_\_ Date \_\_\_\_\_

**2 ELECTION INSPECTORS' PREPARATION CERTIFICATE**  
 WE CERTIFY BY SIGNING BELOW THAT THE FOLLOWING WAS COMPLETED PRIOR TO THE OPENING OF THE POLLS:  
 The oath of office was administered to and signed by all election inspectors present.  
 Verified that the serial number of the tabulator and AutoMARK and the seals used to seal the tabulator and AutoMARK were the same as the serial and seal numbers recorded on the Clerk's Preparation Certificate above.  
 All preparation tests of the tabulator and AutoMARK were completed and the equipment was found to be in proper working order.  
 The ballot was verified by comparing each candidate's name and the placement of any propositions on the ballot with the precinct instruction ballot, tabulator zero tape and AutoMARK test ballot.

**3 OATHS OF CHAIRPERSON AND ELECTION INSPECTORS**  
 STATE OF MICHIGAN, \_\_\_\_\_ }-SS.  
 COUNTY OF County }  
 I Do Solemnly Swear (or affirm) that I will support the Constitution of the United States and the Constitution of this State, and that I will faithfully discharge the duties of the Office of Precinct Board Chairperson at the Election held on Tuesday, the X day of Month, 20 XX, according to the best of my ability.  
 Taken, subscribed and sworn to before me this X day of Month, 20 XX.  
 Chairperson Signature \_\_\_\_\_  
 Signature of Chairperson \_\_\_\_\_  
 Signature \_\_\_\_\_  
 Signature of Person Administering Oath \_\_\_\_\_

STATE OF MICHIGAN, \_\_\_\_\_ }-SS.  
 COUNTY OF County }  
 I Do Solemnly Swear (or affirm) that I will support the Constitution of the United States and the Constitution of this State, and that I will faithfully discharge the duties of the Office of Inspector of Elections at the Election held on Tuesday, the X day of Month, 20 XX, according to the best of my ability.  
 Taken, subscribed and sworn to before me this X day of Month, 20 XX.  
 Signature \_\_\_\_\_  
 Signature \_\_\_\_\_  
 Signature \_\_\_\_\_  
 Signature \_\_\_\_\_  
 Signature \_\_\_\_\_  
 Signature \_\_\_\_\_  
 Taken, subscribed and sworn to before me this X day of Month, 20 XX.  
 Signature \_\_\_\_\_  
 Signature of Person Administering Oath \_\_\_\_\_

**6**

PRECINCT 00001

**LIST OF VOTERS**

#	Voter Name	Ballots	Remarks
1	Mcqvf, Caitlin Lindsey	00000001 00000003	Spoiled
2	Mcqvf, Faith Lynn	00000002	
3	Mcqvf, Adrian Louise	00000004	Affidavit
4	Mcqvf, Barbara Elise	00000028	Absentee Ballot
5	Mcqvf, Martha Carol	00000005	Challenged
6	Mcqvf, Jonathan Clark	00000006	
7	Mcqvf, Philip Carter	00000007	

6. Compare the ballot summary and challengers section with the list of voters. Ensure the total number of spoiled, affidavit, envelope, challenged and AV ballots (if applicable) listed in the ballot summary are also listed individually in the list of voters.
7. If challenged ballots were noted, ensure the Challenged Voter section of the Pollbook was completed.

8. If applicable, ensure the write-in portion of the pollbook was completed. Votes should be properly totaled after the tally marks.

**8** PRESS FIRMLY! MAKE MARKING 3 COPIES

Ward # \_\_\_\_\_ Precinct # 3 Name of City, Township, Village or School District: Acme OPTICAL SCAN STATEMENT OF VOTES Date of Election: 11/7/07

CANDIDATE'S NAME	OFFICE	PARTY	TALLY OF VOTES										TOTAL WRITE-IN VOTES		
			5	10	15	20	25	30	35	40	45	50			
William Smith	Township Clerk	Republican	///	///	///	///	///	///	///	///	///	///	///	///	12
W. Smith	Township Clerk	Republican	///	///	///	///	///	///	///	///	///	///	///	///	2
Bill Smith	Township Clerk	Republican	///	///	///	///	///	///	///	///	///	///	///	///	21
Judith Jones	Township Clerk	Democrat	///	///	///	///	///	///	///	///	///	///	///	///	7
Judy Jones	Township Clerk	Democrat	///	///	///	///	///	///	///	///	///	///	///	///	3
Judith Jones	Township Clerk	Democrat	///	///	///	///	///	///	///	///	///	///	///	///	1
Judy Johns	Township Clerk	Democrat	///	///	///	///	///	///	///	///	///	///	///	///	1
Jim Taylor	State Rep- 33 <sup>rd</sup> Di.	Republican	///	///	///	///	///	///	///	///	///	///	///	///	6
Jimmy Taylor	State Rep- 33 <sup>rd</sup> Di.	Republican	///	///	///	///	///	///	///	///	///	///	///	///	2

ATTACH PRECINCT TABULATOR STATEMENT OF VOTES TAPE HERE.

**9**

W-25 Elementary School Funding Levels

YES	0
NO	0
Over Votes	0
Under Votes	23
Total Votes	23

Greenlee Public Works City Resident:

YES	1
NO	0
Over Votes	0
Under Votes	0
Total Votes	1

BY THE UNDERSIGNED, DO HEREBY CERTIFY THAT THE ABOVE RESULTS ARE A TRUE AND ACCURATE ACCOUNT OF ALL BALLOTS COUNTED AND THAT ALL CHECKS WERE MADE TO BE SURE THE POLLS WERE OPENED AND THAT THE ELECTION WAS HELD IN ACCORDANCE WITH THE LAWS OF THE STATE OF MICHIGAN.

*Sally Jones*  
PRECINCT CHAIRPERSON

*Mark Williams*  
PRECINCT INSPECTOR

*John Lane*  
PRECINCT INSPECTOR

*Erinn Smith*  
PRECINCT INSPECTOR

*Bob Carratt*  
PRECINCT INSPECTOR

*Sam Best*  
PRECINCT INSPECTOR

9. Ensure the tabulator tape/statement of votes (should be affixed to the Statement of Votes page in the Pollbook) was signed by all election inspectors.

10. Ensure the number of ballots tabulated on the totals tape matches the number of voters listed in the pollbook.

11. Ensure the Ballot Summary (found in the Pollbook) is completed, balanced, and totals are accurate. The **Difference** should always be zero.

**BALLOT SUMMARY**

**WE CERTIFY THE FOLLOWING:**

**NUMBER OF BALLOTS DELIVERED TO PRECINCT:**

A. Number of official ballots delivered to precinct:

Ballot Style	Starting No.	Ending No.	Count
[None]	00000001	00000200	200
			200

B. Number of absent voter return envelopes received by board: 2

**C. Total of lines A and B (Must match Line K below): 202**

**NUMBER OF BALLOTS AT CLOSE OF POLLS:**

D. Number of ballots tabulated: 15

E. Number of AV ballot envelopes delivered to precinct which did not contain ballot or were not processed for any reason: 0

F. Number of ballots reissued to voters who spoiled their ballot at the pollin place (spoiled or defective ballots): 2

G. Number of ballots rejected: 0

H. Number of ballots used by election inspectors for ballot duplications: 0

I. Number of PROVISIONAL "envelope" ballots issued: 1

J. Number of UNUSED BALLOTS (excess ballots):

Ballot Style	Starting No.	Ending No.	Count
[None]	00000017	00000200	184
			184

**K. Total of Lines D, E, F, G, H, I, and J (Must match Line C above): 202**

L. Difference: **11** 0

STATEMENT OF VOTES - CERTIFICATE OF ELECTION INSPECTORS

JURISDICTION: Jurisdiction WARD/PRECINCT: # # DATE OF ELECTION: Election Date

WE CERTIFY THE FOLLOWING:

12. AT THE CLOSE OF THE POLLS (Except as noted on the Remarks Page of this Poll Book)

- The number of voters according to this Poll Book is (Include absent voter ballots if processed in precinct and the number of voters in addendum poll book(s) if any). Record on cover of poll book. ###
- The number of ballots tabulated is: ###
- Verified that the number of ballots tabulated equals the number of voters according to this Poll Book and that no discrepancies exist between the Poll Book and Applications to Vote. If they do not agree, make a notation in the Remarks Section of this Poll Book.
- Listed the challenged voters, if any, in this Poll Book and properly identified the challenged ballots.
- Verified that all valid absent voter ballots have been tabulated (if absent voter ballots processed in precinct).
- Verified that any ballots requiring duplication have been accurately duplicated and tabulated.
- Verified that all valid write-in votes have been tallied and the totals recorded to the Statements of Votes in this Poll Book.
- Verified that all provisional "envelope" ballots issued, if any, were properly recorded, identified and sealed in provisional ballot security envelopes.
- Verified that the tabulator statement of votes tape and proposal language are attached to the appropriate copies.
- Verified that the number of ballots issued to the precinct, the number of ballots issued to voters, the number of spoiled ballots and the number of unused ballots are accurately reflected in the Ballot Summary Report.
- Verified that if the number of ballots tabulated does not agree with the number of voters according to the List of Voters report, the discrepancy is noted in the Remarks section.

13. By signing below, we, the undersigned members of the Board of Election Inspectors, certify that all ballots (used and unused) except envelope ballots were properly sealed into an approved BALLOT STORAGE CONTAINER(S) by affixing seal(s).

Seal No. ##### Seal No. Possible Seal No. Possible

14. We further certify that if the Tabulator Program (Prom Pack/Memory Card) has been removed from the tabulator it was properly sealed in an approved STORAGE CONTAINER by affixing Seal No. #####

15.  Inspector Signature Party #1  Inspector Signature Party #2

Signature of member who sealed the BALLOT STORAGE CONTAINER and TABULATOR PROGRAM STORAGE CONTAINER. Signature of member who verified these sealings. (May not represent same political party as member who sealed both storage containers.)

ALL INSPECTORS PRESENT AT THE CLOSE OF THE POLLS MUST SIGN BELOW  
 (Any Inspectors Leaving Prior to the Close of the Polls must make a Notation in the Remarks Section of this Poll Book)

<input checked="" type="checkbox"/> <u>Signature</u>	Phone <u>        </u>	<input checked="" type="checkbox"/>	Phone <u>        </u>
<input checked="" type="checkbox"/> <u>Signature</u>	Phone <u>        </u>	<input checked="" type="checkbox"/>	Phone <u>        </u>
<input checked="" type="checkbox"/> <u>Signature</u>	Phone <u>        </u>	<input checked="" type="checkbox"/>	Phone <u>        </u>
<input checked="" type="checkbox"/> <u>Signature</u>	Phone <u>        </u>	<input checked="" type="checkbox"/>	Phone <u>        </u>
<input checked="" type="checkbox"/> <u>Signature</u>	Phone <u>        </u>	<input checked="" type="checkbox"/>	Phone <u>        </u>
<input checked="" type="checkbox"/> <u>Signature</u>	Phone <u>        </u>	<input checked="" type="checkbox"/>	Phone <u>        </u>

DETACH CERTIFICATE OF ELECTION INSPECTORS (RED) AND WRITE-IN SECTION (GREEN), AFFIX TOTALS TAPE AND ENTER OR ATTACH PROPOSAL LANGUAGE TO APPROPRIATE COPIES AND SEAL IN DESIGNATED ENVELOPES.

WHITE - DO NOT DETACH!! THIS PART REMAINS IN POLL BOOK!!

Items 12-15 are usually found on the last page or two in the Pollbook.

- 12. Ensure all checkboxes are completed in the Election Inspectors' Certificate and that the inspectors signed.
- 13. Ensure the ballot container seal number is properly recorded. Most containers only require one seal.
- 14. Ensure the program container seal number is properly recorded (if applicable).
- 15. Ensure inspectors of different political parties signed the seal certification.

*Program Container Certificate (if applicable)*

Finally, the Program Container Certificate should be reviewed. Ensure proper completion by:

1. Ensure the seal number was properly recorded.
2. Ensure inspectors of different political parties signed the seal certification.

**Provisional Ballot Form Review**

Review the *Provisional Ballot Forms* with the Pollbook.

- For a voter issued an Affidavit ballot, review the *Provisional Ballot Form* and verify the election inspector marked Question 4 Yes.
- For a voter issued an Envelope ballot, review the *Provisional Ballot Form* and verify the election inspector marked Question 4 No.

Without researching the registration of each voter, review the uncounted Envelope ballot *Provisional Ballot Forms*.

- Determine based on the information provided on the form if the Envelope ballot was appropriately processed by the election inspector and/or the local Clerk.

Finally, ensure a master card is available for each voter issued an Affidavit or Envelope ballot verifying the voter was registered to vote after the election.

Answer the appropriate questions on the worksheet after review of all *Provisional Ballot Forms*. Explain any discrepancies on the backside of the worksheet (*MCL 168.523a and Ch. 11 Clerk Accreditation Manual*).

**Final Review**

Ensure all aspects of the worksheet have been completed and that any discrepancies have been explained on the backside of the worksheet. Once the verification is complete, replace the Pollbook and Statement of Votes into the appropriate envelopes and reseal as necessary. Each auditor should sign the backside of the worksheet verifying the completion of the process. After the post-election audit is conducted, the worksheet should be reviewed with the local Clerk.

The worksheet data must then be entered electronically in the eLearning Center using the Post-Election Audit Checklist Online within two days of audit completion. Auditors should retain the worksheet in case clarification is needed. Once the data has been submitted electronically, the Bureau of Elections will make assignments in the eLearning Center to those jurisdictions with deficiencies. The assignments could be a manual, reference document, online course, and/or video tutorial reinforcing proper procedures.

**TABULATOR PROGRAM(S)  
STORAGE CONTAINER  
CERTIFICATE**

We, the undersigned Election Officials, certify that the transfer container for this precinct was properly sealed and the seal number agreed with the seal number recorded on the Precinct Transfer Container Certificate.

We further certify that the Program (Memory Unit) and the original seal(s) were returned to the transfer container which was properly sealed by affixing seal #1 #####.

2 Inspector Signature Party #1  
Signature of member who sealed the container.

X Inspector Signature Party #2  
Signature of member who verified the sealing.  
(May not represent same political party as member who sealed transfer container.)

**Election date**  
Date of Election

**Jurisdiction** #  
City, Township, Village or School District Ward/Precinct No.

## Appendix

### Additional Test Deck Charts

<b>Instruction</b>	<b>Pre-determined result – Proposal Only Election</b>
<b>1</b>	All positions on the ballot voted.
<b>2</b>	All unused positions on the ballot voted.
<b>3</b>	A blank ballot.
<b>4</b>	One ballot voted correctly
<b>5</b>	A ballot voted from a different precinct.
<b>Dif. Totals</b>	Additional ballots voted to ensure a different total number of valid votes are cast for and against each proposal.